

CONNECTING TECHNOLOGY & BUSINESS

Fiber Optic System

C A T A L O G 2012



SINDA

www.sindaoptic.com

SHENZHEN SINDA OPTIC TECHNOLOGY CO.,LTD

Table Of Contents

Introduction	1
 Fiber PLC Splitters	
PLC Splitter.....	2~4
Fiber Array.....	5~6
 Fiber Optic Accessories	
Patch Cords & Pigtails.....	7~16
Adapters.....	17~19
Connectors.....	20~21
 FTTH	
Fiber Media converter.....	22
Fiber Patch panel.....	23
Fiber terminal box.....	24
Wall mount terminal box.....	25
Splice closure.....	26~27
 Fiber Optic Equipments & Testing Tools	
Equipments.....	28~29
Testing Tools.....	29

Fiber Plc Splitter

PLC Splitter, Fiber array

PLC Splitter

Introduction

It is used for small spaces can be easily placed in a formal joint boxes and splice closure. In order to facilitate welding, does not need specially designed for space reserved. SINDA PLC splitter family features either ribbon or individual fiber output. SINDA provides whole series of 1xN and 2xN splitter products that are tailored for specific applications. All splitters provide guarantee optical performance and high reliability that meet GR-1209-CORE and GR-1221-COR requirements.



● PLC Splitter Bare Fiber



● PLC Splitter with Fan-out

Application

- Fiber to The Point (FTTX)
- Fiber to The Home (FTTH)
- Passive optical network (PON)
- Local Area Network (LAN)
- Cable Television (CATV)
- Test Equipment

Features

- Good uniformity and low insertion loss
- Low Polarization Dependent Loss
- Excellent Environmental Stability
- Excellent Mechanical Stability
- Telecordia
- GR-1221 and GR-1209

Specification

Port	1x2	1x4	1x8	2x4	2x8	1x16	2x16	1x32	2x32	1x64
WxHxL (mm)	4x4x40	4x4x40	4x4x40	4x4x45	4x4x45	4x7x50	4x7x60	4x7x50	4x7x60	4x12x60

Fiber Plc Splitter

Plc Splitter, Fiber array

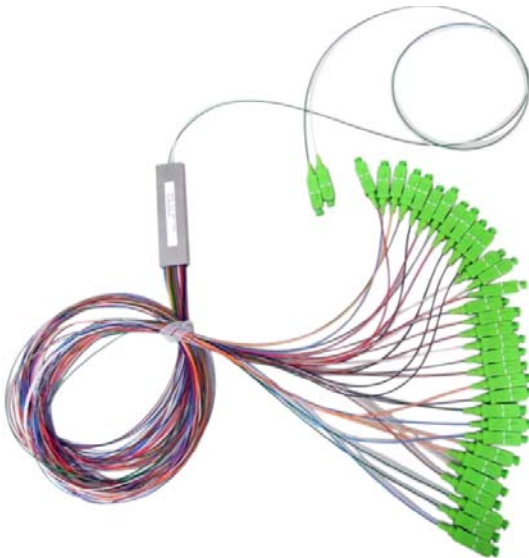
PLC Splitter

Introduction

It is used for small spaces can be easily placed in a formal joint boxes and splice closure. In order to facilitate welding. does not need specially designed for space reserved. SINDA PLC splitter family features either ribbon or individual fiber output. SINDA provides whole series of 1xN and 2xN splitter products that are tailored for specific applications. All splitters provide guarantee optical performance and high reliability that meet GR-1209-CORE and GR-1221-COR requirements.



● PLC Splitter Mini Module



● PLC Splitter Mini Module

Application

- Fiber to The Point (FTTX)
- Fiber to The Home (FTTH)
- Passive optical network (PON)
- Local Area Network (LAN)
- Cable Television (CATV)
- Test Equipment

Features

- Good uniformity and low insertion loss
- Low Polarization Dependent Loss
- Excellent Environmental Stability
- Excellent Mechanical
- Stability Telecordia
- GR-1221 and GR-1209

Specification

Port	1x2	1x4	1x8	2x4	2x8	1x16	2x16	1x32	2x32	1x64
WxHxL(m m)	4x12x60					6x20x80				6x20x80

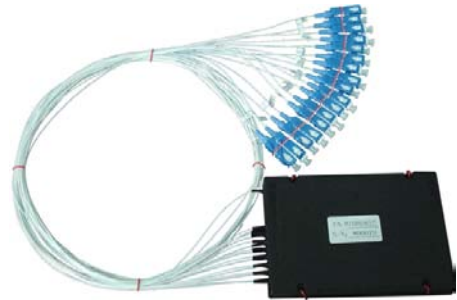
Fiber Plc Splitter

Plc Splitter, Fiber array

PLC Splitter

Introduction

It is used for small spaces can be easily placed in a formal joint boxes and splice closure. In order to facilitate welding, does not need specially designed for space reserved. SINDA PLC splitter family features either ribbon or individual fiber output. SINDA provides whole series of 1xN and 2xN splitter products that are tailored for specific applications. All splitters provide guarantee optical performance and high reliability that meet GR-1209-CORE and GR-1221-COR requirements.



● PLC Splitter ABS Module



● PLC Splitter ABS Module

Application

- Fiber to The Point (FTTX)
- Fiber to The Home (FTTH)
- Passive optical network (PON)
- Local Area Network (LAN)
- Cable Television (CATV)
- Test Equipment

Features

- Good uniformity and low insertion loss
- Low Polarization Dependent Loss
- Excellent Environmental Stability
- Excellent Mechanical
- Stability Telecordia
- GR-1221 and GR-1209

Specification

Port	1x2	1x4	1x8	2x4	2x8	1x16	2x16	1x32	2x32	1x64	2x64
WxHxL (mm)	100x80x10					120x80x18		142x102x14.5/ 141x115x18		6x20x80	

Fiber Plc Splitter

Fiber Plc Splitter

Plc Splitter, Fiber array

Fiber Array

Features

- From Single Channel to 64 channels
- High Precise Fiber Core-to-Core Accuracy
- High Precise Polishing Angle
- Low Insertion Loss and High Reliability
- Telcordia GR-1209 & GR-1221-CORE Compliant
- RoHS Compliant.



● Fiber Array



● Fiber Array

Applications

- Planar Lightwave Circuit (PLC's)
- Array Waveguide Grating (AWG's)

Specification

Number of Channels	1CH	2CH	4CH	8CH	16CH	32CH	64CH
Material	Pyrex & Quartz or Silicon						
Pitch(um)	127/ 250(±0.5)						
Polishing Angle	8(±0.3)						
Insertion Loss(dB)	0.15						
Uniformity(dB)	0.1						
PDL(dB)	0.05						
Return Loss(dB)	>55						
Channel Spacing(um)	250	250	250	127	127	127	127
Package(mm)	8x2.5x2.5	9.5x2.5x2.5	9.5x2.5x2.5	9.5x2.5x2.5	11.5x3.0x2.5	11.5x5.7x2.5	12x9.8x2.5
Operating Temperature	-40 ~ +85						
Storage Temperature	-40 ~ +85						
Fiber Length	1m or on customer's request						
Fiber Type	ITU G.652D/G.657A or customized						

Fiber Plc Splitter

Fiber Plc Splitter

Plc Splitter, Fiber array

PLC Splitter

How to order us?

Below pls find our order information , you can chose the type you need, then send us the information. We could make products by totally according to customer's request. Both OEM & ODM order Accept!

Example Item Name:" 1x32 moudle SM (G657A1) 1260-1650nm, 1M of input and output "

Fiber Plc Splitter

Ordering information

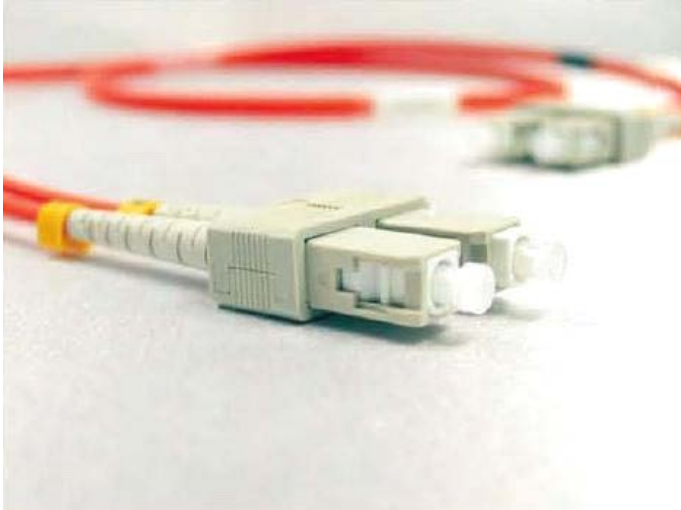
PLC Type	x in x out	Connector Type	Fiber Length	Fiber Type
1- bare type	1- 1x2	1- without connector	1- 1.0m	1- G657A1
2- Mini type	2- 1x4	2- sc	2- 1.2m	2- G657A2
3- moudule type	3- 1x8	3- sc/apc	3- 1.5m
	4- lc		
		5- lc/apc		
		6- fc		
		7- fc/apc		
		8- st		
		9- st/apc		
			

Fiber Optic Accessories

Patch Cords & Pigtails, Adapters, Connectors, Attenuators

Fiber Patch cords & Pigtails

SC Type



Introduction

SINDA SC Patch Cords are manufactured in our state-of-the-art manufacturing facilities with our own advanced polishing and assembly processes. Multimode SC patch cords can be ordered in simplex or duplex configurations with Riser(OFNR).Plenum(OFNP) or Low Smoke Zero Halogen(OFN-LS) Patchcord systems. Precise control of our polishing process and stringent test requirements yield low insertion loss patchcords every time. All SINDA SC patch cords are compliant with EIA/TIA 568A, TIA 604 FOCIS 3 and ISO 11801 for optical performance and intermateability. Our advanced polishing process and measuring equipment allows us to manufacture the highest quality patch cords needed for today's stringent optical networks.

Features

- All ceramic ferrules for maximum optical and mechanical performance.
- All Patch cords are 100% optically inspected and tested Individually labeled with unique ID for traceability.
- A variety of fiber and cable types available
- A variety of boot styles and colors available
- Custom print legends and jacket colors available
- EIA/TIA compliant



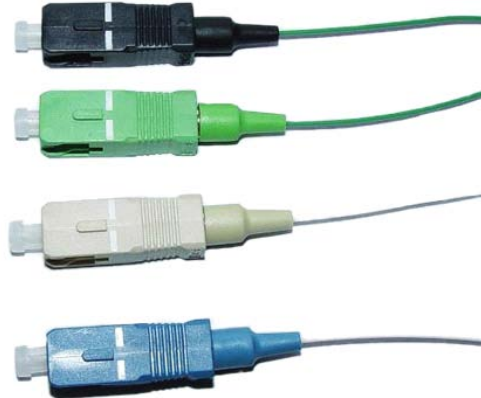
Fiber Optic Accessories

Patch Cords & Pigtails, Adapters, Connectors, Attenuators

SC Type

Applications

LANS and WANS (Ethernet, FDDI & Fiber Channel)
 Test Equipment
 CCTV and Security.



Fiber Patch cords & Pigtails

Technical Specifications			
Fiber Type	62.5/125m	50/125m	9/125m
Max.Insertion Loss(@850nm)	≤0.3dB	≤0.3dB	≤0.3dB
Typ.Insertion Loss	≤0.2dB	≤0.2dB	≤0.2dB
Typ.Return Loss	≥35dB	≥35dB	PC≥45dB
			UPC≥55dB
			APC≥60dB
Cable Retention(900um)	2 lbs.	2 lbs.	2 lbs.
Mating Durability(500 cycles)	<0.2dB	<0.2dB	<0.2dB
Ferrule Material	Ceramic	Ceramic	Ceramic
Housing Material	Composite	Composite	Composite

Fiber Optic Accessories

Patch Cords & Pigtaills, Adapters, Connectors, Attenuators

Fiber Patch cords & Pigtaills

LC Type

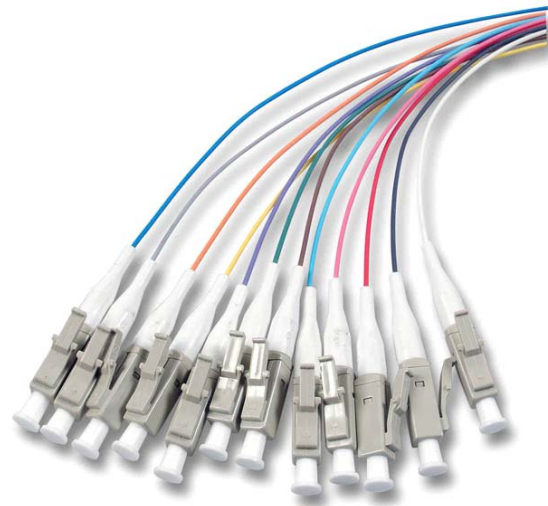


Introduction

SINDA SC Patch Cords are manufactured in our state-of-the-art manufacturing facilities with our own advanced polishing and assembly processes. Multimode SC patch cords can be ordered in simplex or duplex configurations with Riser (OFNR), Plenum (OFNP) or Low Smoke Zero Halogen (OFN-LS) Patchcord systems. Precise control of our polishing process and stringent test requirements yield low insertion loss patchcords every time. All SINDA SC patch cords are compliant with EIA/TIA 568A, TIA 604 FOCIS 3 and ISO 11801 for optical performance and intermateability. Our advanced polishing process and measuring equipment allows us to manufacture the highest quality patch cords needed for today's stringent optical networks.

Features

- All ceramic ferrules for maximum optical and mechanical performance.
- All Patch cords are 100% optically inspected and tested Individually labeled with unique ID for traceability.
- A variety of fiber and cable types available
- A variety of boot styles and colors available
- Custom print legends and jacket colors available
- EIA/TIA compliant



Fiber Optic Accessories

Patch Cords & Pigtails, Adapters, Connectors, Attenuators

LC Type

Applications

LANS and WANS (Ethernet, FDDI & Fiber Channel)
 Test Equipment
 CCTV and Security.



Technical Specifications

Fiber Type	62.5/125m	50/125m	9/125m
Max. Insertion Loss(@850nm)	≤0.3dB	≤0.3dB	≤0.3dB
Typ. Insertion Loss	≤0.2dB	≤0.2dB	≤0.2dB
Typ. Return Loss	≥35dB	≥35dB	PC≥45dB
			UPC≥55dB
			APC≥60dB
Cable Retention(900um)	2 lbs.	2 lbs.	2 lbs.
Mating Durability(500 cycles)	<0.2dB	<0.2dB	<0.2dB
Ferrule Material	Ceramic	Ceramic	Ceramic
Housing Material	Composite	Composite	Composite

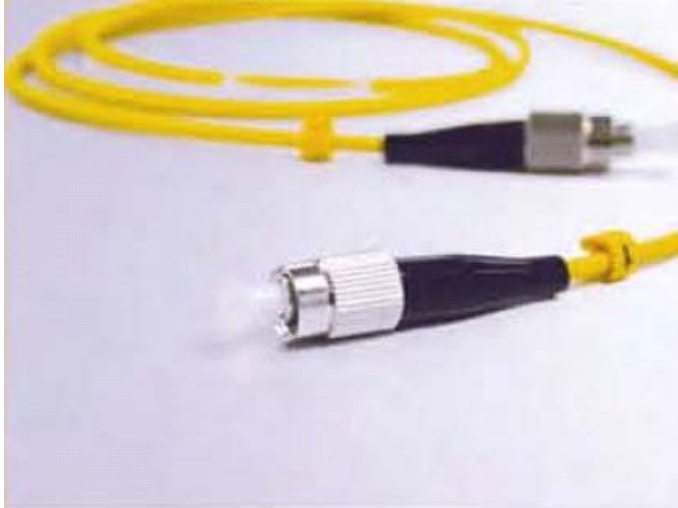
Fiber Patch cords & Pigtails

Fiber Optic Accessories

Patch Cords & Pigtails, Adapters, Connectors, Attenuators

Fiber Patch cords & Pigtails

FC Type

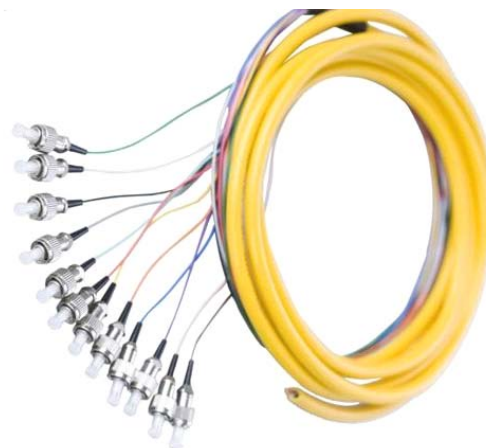


Introduction

SINDA FC Patch Cords are manufactured in our state-of-the-art manufacturing facilities with our own advanced polishing and assembly processes. Multimode SC patch cords can be ordered in simplex or duplex configurations with Riser(OFNR). Plenum(OFNP) or Low Smoke Zero Halogen(OFN-LS) Patcand systems. Precise control of our polishing process and stringent test requirements yield low insertion loss patchcords every time. All SINDA SC patch cords are compliant with EIA/TIA 568A, TIA 604 FOCIS 3 and ISO 11801 for optical performance and intermateability. Our advanced polishing process and measuring equipment allows us to manufacture the highest quality patch cords needed for today's stringent optical networks.

Feauters

All ceramic ferrules for maximum optical and mechanical performance.
All Patch cords are 100% optically inspected and tested Individually labeled with unique ID for traceability.
A variety of fiber and cable types available A variety of boot styles and colors available
Custom print legends and jacket colors available EIA/TIA compliant



Fiber Optic Accessories

Patch Cords & Pigtails, Adapters, Connectors, Attenuators

FC Type

Applications

LANS and WANS (Ethernet, FDDI & Fiber Channel)
 Test Equipment
 CCTV and Security.



Technical Specifications

Fiber Type	62.5/125m	50/125m	9/125m
Max.Insertion Loss(@850nm)	≤0.3dB	≤0.3dB	≤0.3dB
Typ.Insertion Loss	≤0.2dB	≤0.2dB	≤0.2dB
Typ.Return Loss	≥35dB	≥35dB	PC≥45dB
			UPC≥55dB
			APC≥60dB
Cable Retention(900um)	2 lbs.	2 lbs.	2 lbs.
Mating Durability(500 cycles)	<0.2dB	<0.2dB	<0.2dB
Ferrule Material	Ceramic	Ceramic	Ceramic
Housing Material	Composite	Composite	Composite

Fiber Optic Accessories

Patch Cords & Pigtails, Adapters, Connectors, Attenuators

ST Type

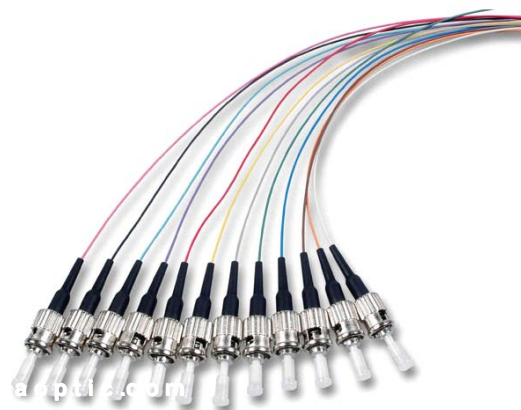


Introduction

SINDA FC Patch Cords are manufactured in our state-of-the-art manufacturing facilities with our own advanced polishing and assembly processes. Multimode SC patch cords can be ordered in simplex or duplex configurations with Riser(OFNR). Plenum(OFNP) or Low Smoke Zero Halogen(OFN-LS) Patchcord systems. Precise control of our polishing process and stringent test requirements yield low insertion loss patchcords every time. All SINDA SC patch cords are compliant with EIA/TIA 568A, TIA 604 FOCIS 3 and ISO 11801 for optical performance and intermateability. Our advanced polishing process and measuring equipment allows us to manufacture the highest quality patch cords needed for today's stringent optical networks.

Features

- All ceramic ferrules for maximum optical and mechanical performance.
- All Patch cords are 100% optically inspected and tested Individually labeled with unique ID for traceability.
- A variety of fiber and cable types available A variety of boot styles and colors available
- Custom print legends and jacket colors available EIA/TIA compliant



Fiber Patch cords & Pigtailed

Fiber Optic Accessories

Patch Cords & Pigtails, Adapters, Connectors, Attenuators

ST Type

Applications

LANS and WANS (Ethernet, FDDI & Fiber Channel)
 Test Equipment
 CCTV and Security.



Technical Specifications

Fiber Type	62.5/125m	50/125m	9/125m
Max. Insertion Loss(@850nm)	≤0.3dB	≤0.3dB	≤0.3dB
Typ. Insertion Loss	≤0.2dB	≤0.2dB	≤0.2dB
Typ. Return Loss	≥35dB	≥35dB	PC≥45dB
			UPC≥55dB
			APC≥60dB
Cable Retention(900um)	2 lbs.	2 lbs.	2 lbs.
Mating Durability(500 cycles)	<0.2dB	<0.2dB	<0.2dB
Ferrule Material	Ceramic	Ceramic	Ceramic
Housing Material	Composite	Composite	Composite

Fiber Patch cords & Pigtails

Fiber Optic Accessories

Patch Cords & Pigtails, Adapters, Connectors, Attenuators

Fiber Patch cords & Pigtails

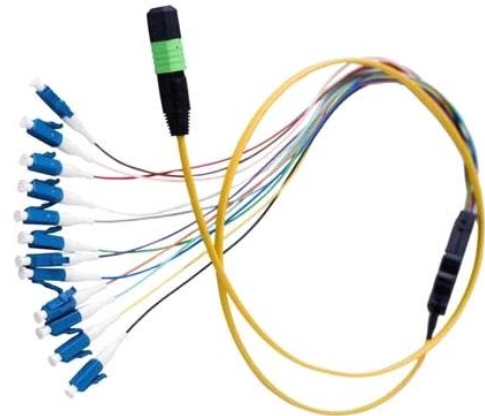
E2000 Patch cords



Introduction

Precision 1.25mm ceramic ferrule for maximum optical performance
 RJ style latch in a connector body half the size of a conventional
 All patch cords are 100% optically inspected and tested
 Customised print legends and jacket colors available
 Individually labeled with unique ID for traceability. A variety of boot styles and colors available

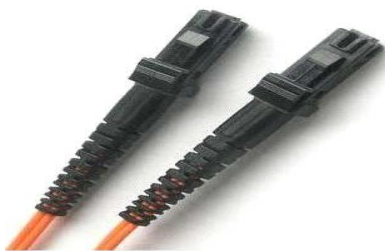
MPO Patch Cords



Features

All ceramic ferrules for maximum optical and mechanical performance.
 All Patch cords are 100% optically inspected and tested Individually labeled with unique ID for traceability.
 A variety of fiber and cable types available A variety of boot styles and colors available
 Custom print legends and jacket colors available EIA/TIA compliant

MTRJ Patch Cords



MU Patch Cords



Applications

LANS and WANS (Ethernet, FDDI & Fiber Channel)

Test Equipment
 CCTV and Security.

Fiber Optic Accessories

Patch Cords & Pigtailes, Adapters, Connectors, Attenuators

Fiber patch cords & Pigtailes

How to order us?

Below pls find our order information , you can chose the type you need, then send us the information. We could make products by totally according to customer's request. Both OEM & ODM order Accept!

The length for patch cords & Pigtailes by according to customer's request!

Example Item Name: Patch cords " LC/PC-LC/PC-SSM 9/125-3M 3.0mm "
 Pigtailes "LC/PC- SM 9/125 -1.5M 0.9MM "

Ordering information

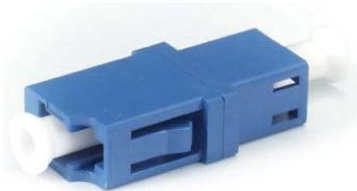
Connector Type	Polishing	Ferrule Material	Fiber Type	cable Dia
1- sc	1- UPC	1- 9/125 singlemode	1-simplex	1- 0.9mm
2- sc/apc	2- SPC	2- 50/125 Multimode	2-duplex	2- 1.6mm
3- lc	3- PC	3- 62.5/125 Multimode	3- 4 cores	3- 1.8mm
4- lc/apc	4- APC	4- 10G Multimode	4- 8 cores	4- 2.0mm
5- fc		5- OM3 Multimode	5- 12 cores	5- 2.4mm
6- fc/apc			6- 3.0mm
7- st				
8- st/apc				
9- E2000				
.....				

Fiber Patch cords & Pigtailes

Fiber Optic Accessories

Fiber Patch cords & Pigtailed, Adapters, Connectors, Attenuators

Fiber Adapters



LC Adapter

Description: LC type adapters are used in high density applications and feature a quick plug in installation. Adapters are available in both simplex and duplex designs and utilize high quality zirconia and phosphorous bronze sleeves. The LC duplex adapter uses the same cutout as the cooper RJ-45, resulting in less redesign work when retrofitting existing panels.



SC Adapter

Description: SC adapters has a plastic housing and either a precision zirconia or a rugged phosphor bronze sleeve. Zirconia sleeve enables stable connection and thus enhances performance, and is ideal for single mode applications. Phosphor bronze sleeve provides durability, and is duplex adapters are available.



ST Adapter

Description: ST adapters connect industry standard ST connectors and are available in D-Mount and Flange-Mount versions. ST adapters are available with ceramic or metallic sleeves, feature a metal body for long life, and easily install in panel mount applications.



FC Adapter

Description: FC adapter metal housing and either a precision zirconia or a rugged phosphor bronze sleeve. Zirconia sleeve enables stable connection and thus enhances performance, and is ideal for single mode applications. Phosphor bronze sleeve provides durability, and is ideal for multimode applications. Square flange mount and "D" hole mount styles are available.



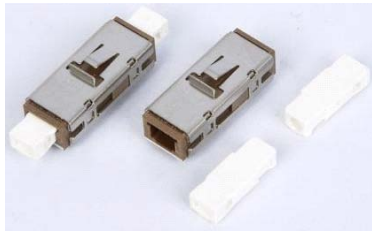
MTRJ Adapter

Description: The single mode and multimode MT-RJ products are used in two fiber optical interconnectors and are therefore well suited for high density applications. The MT-RJ Adapter comes standard in black, with additional colors available. An MT-RJ Adapter with SC style housing is also available for applications where SC footprint is required.

Fiber Optic Accessories

Fiber Patch cords & Pigtails, Adapters, Connectors, Attenuators

Fiber Adapters



MU Adapter

Description: MU adapters are comprised of a polymer outer body and inner assembly fitted with a precision alignment mechanism. These adapters are precision made and manufactured to demanding specifications. The combination of a ceramic/ bronze alignment sleeves and precision moulded polymer housing provides consistent long-term mechanical and optical performance



E2000 Adapter

Description: The E2000 Fiber Optic Adapter features injection-molded PBT housing, rated to the UL94V-01 Flammability Index. Spring-loaded shutters protect against dust and scratching. A high quality split ceramic sleeve ensures high performance over 1000 mating cycles.



MPO Adapter

Description: The MPO Fiber Optic Adapter is to provide MPO Patch cord to MPO patchcord Fiber connecting. MPO Optical Adaptors are flange type adaptors with plastic housing, both single mode and multimode ones available. MPO Adaptors are used in high-density backplane and Printed Circuit Board (PCB) applications in data and telecommunications systems. They offer up to 12 times the density of standard connectors. The MPO adapters provide significant space and cost savings.



DIN Adapter

Description: We supply DIN fiber optic adaptor which come with zirconia sleeves and threaded size. DIN Optical adaptors are available in single mode type and Multimode types. DIN 47256(LSA) feature a single unit body with spring-loaded free floating zirconia ferrule. This unique connector offers superior performance in a compact DIN47256 compatible design suitable for various applications. The DIN Adaptors are consistent performance and durability.



SMA Adapter

Description: SMA Fiber Optic Adaptors, these FSMA mating adapter can be used with all standard FSMA fiber optic connectors and are suitable for panel mounting. Standard FSMA fiber optic connectors are used for LAN, WAN, Test & Measurement, Industry, Medical and Sensors application.

Fiber Accessories

Fiber Patch cords & Pigtails, Adapters, Connectors, Attenuators



SMA Adapter

Description: Hybrid adapters are used to connect optical connectors of different type, they are very useful in connecting patch cords with different connector.

have low insertion loss and high return loss. Supply a wide range of different kinds of hybrid optical fiber adapters with most popular connector type, such as LC, SC, ST, FC, E2000, MU in singlemode, multimode, UPC & APC.

Fiber Adapters

Application

Fiber optic transmission system
 CATV networks
 LAN
 Testing/Measurement Instruments
 Fiber distribution frame, Mounts in Fiber Optic Wall Mount and Rack Mount CabinetS

Features

Excellent Changeability and directivity
 100% Optic test (Insertion Loss)
 Ceramic and phosphor bronze sleeve tube optical
 Accurate mounting dimensions
 ITU standard

Technical Specifications

Polish Type Unit	PC	APC
Insertion Loss(dB)	<0.20	<0.20
Return Loss(dB)	≥50	≥65
Mating Durability(500 cycles)	<0.20	<0.20
temperature stability dB	≤0.30	≤0.30
Operating Temperature	-20°C	70°C
Storage Temperature	-40°C	80°C

Fiber Accessories

Fiber Patch cords & Pigtails, Adapters, Connectors, Attenuators

Fiber Connector

Fiber Connectors



LC SM connector 0.9



LC/APCMM connector 2.0



LC SM connector 3.0



SC SM connector 0.9



SC MM connector 2.0



SC/APC connector 3.0



FC/APC connector 0.9



FC SM connector 2.0



FC SM connector 3.0



ST SM connector 0.9



ST MM connector 2.0



ST SM connector 3.0



MPO connector



MTRJ connector



MU connector

Fiber Accessories

Fiber Patch cords & Pigtails, Adapters, Connectors, Attenuators

Fiber connector

Introduction

SINDA connectors offer superior performance with very high repeatability. These products are fully intermatable with standard NTT products and deliver long term stability under a wide range of application and conditions. Our product utilizes peradiused Zirconia ferrules to ensure low loss.

Applications

Local Area Networks
Fast Ethernet
ATM Networks
Optical Transport
Optical Access Networks

Features

Patented Universal SC
Duplex Clip Option
Telcordia GR-326
Compliant
Both Metal and Polymer
Body
Adapters for all Standard
and Hybrid
Requirements

Technical Specifications

Parameters	Phosphor/Bronze	Zirconia
Operating Temperature	-40°C ~ +85°C	-40°C ~ +85°C
Connection Durability	500 Matings	500 Matings
Repeatability	IL < 0.1dB	IL < 0.1dB
Insertion Loss	< 0.3dB	< 0.2dB

Ordering Information

Connector Model	Ferrule Material	Connect or Type	Boot Dia	Boot Color	Customer's request
1- sc	1- singlemode	1- simplex	1- 0.9mm	1- Green	1- assembly
2- sc/apc	2- multimode	2- duplex	2- 2.0mm	2- white	2- un-assembly
3- fc			3- 3.0mm	3- Bule	
4- fc/apc				4- Beige	
5- st				5- Black	
6- st/apc					
7- lc					
8- lc/apc					
9- E2000					
.....					

Fiber Connectors

FTTH

Media Converter, patch panel, terminal box, wall mount box, closure box

Fiber Media converter

Media Converter

Introduction

SINDA provide Fast Ethernet(10/100Mbps) and Gigabit Ethernet media converters with both standard and industrial type versions. You can choose the correct product for your application by checking the distance, Connector type and wavelength depending on your system.

Features

- Inner power or external power optional
- Inner power adapt single slot configuration
- Media converter module could be used with rack mount
- Power supply AC 220V or DC-48V
- Auto identify MDI/MDIX
- Full/half duplex negotiational
- Extend fiber-optic distance up to 120km with single-mode fiber



Technical Specifications

Connector Type	Fiber Type	Wavelength	Typical Distance	Min TX PWR	Max TX PWR	Sensitivity	Link Budget
ST/SC	Multimode	850nm	2km	-19.0dBm	-14.0dBm	-30.0dBm	11.0dB
MTRJ	Multimode	850nm	2km	-19.0dBm	-14.0dBm	-30.0dBm	11.0dB
SC	Singlemode	1310nm	10km	-18.0dBm	-7.0dBm	-28.0dBm	10.0dB
SC	Singlemode	1310nm	20km	-20.0dBm	-7.0dBm	-32.0dBm	14.0dB
SC	Singlemode	1310nm	25km	-15.0dBm	-7.0dBm	-34.0dBm	19.0dB
SC	Singlemode	1310nm	40km	-5.0dBm	0.0dBm	-34.0dBm	29.0dB
SC	Singlemode	1310nm	60km	-3.0dBm	0.0dBm	-38.0dBm	35.0dB
SC	Singlemode	1310nm	80km	-2.0dBm	3.0dBm	-37.0dBm	35.0dB
SC	Singlemode	1550nm	100km	-5.0dBm	0.0dBm	-36.0dBm	31.0dB

FTTH

Media Converter, patch panel, terminal box, wall mount box, closure box

Patch Panel

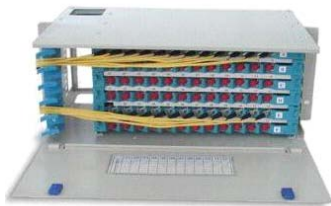
Features

- Various removable adaptor plates
- Quick field installation
- Removable doors for easy access
- Retractable splicing tray

Application

- Fiber Optic Telecommunication
- CATV System
- LAN (Local Area Networks)
- High Speed Transmission Systems

Fiber Patch panel



Specifications

ITEM No.	SIZE	CAPACITY	REMARK
SD-RM-12	480*210*45mm	12 Cores	1U
SD-RM-24	480*210*45mm	24 Cores	1U
SD-RM-48	480*210*90mm	48 Cores	2U

Specifications

ITEM No.	SIZE	CAPACITY	REMARK
SD-DR-12	480*300*45mm	12 Cores	1U
SD-DR-24	480*300*45mm	24 Cores	1U
SD-DR-48	480*300*90mm	48 Cores	2U

Specifications

ITEM No.	SIZE	CAPACITY	REMARK
SD-RO-12	480*315*44.5mm	12 Cores	1U
SD-RO-24	480*315*44.5mm	24 Cores	1U

Specifications

ITEM No.	SIZE	CAPACITY	REMARK
SD-PN-12	482*305*44.4mm	12 Cores	1U
SD-PN-24	482*305*44.4mm	24 Cores	1U
SD-PN-48	482*305*88.8mm	48 Cores	2U

Specifications

ITEM No.	SIZE	CAPACITY	REMARK
SD-UN-12	430*300*47mm	12 cores	1U
SD-UN-24	430*300*75mm	24 cores	2U
SD-UN-48	430*300*140mm	48 cores	4U
SD-UN-72	430*300*210mm	72 cores	6U
SD-UN-96	430*300*280mm	96	8U

FTTH



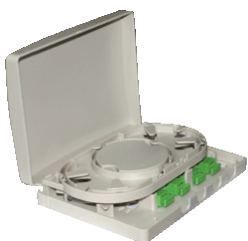
Media Converter, patch panel, terminal box, wall mount box, closure box

Adapter Outlet



Description: Applicable in the straight through or branch connection of indoor optical cable available for the distribution and terminal connection of various kinds of optical fiber system. Fit for wall mounted ,especially for mini-network terminal distribution.Available for FC, SC, ST,LC ect.

Mini Terminal box



Description: This box could be used for wall mounted and rack mounted applications. The base and cover of the box adopts "self-clip" method, which is easy and convenient to open and close.Could be used for adaptors such as SC,FC,E2000, ect..The max capacity is 4 fibers.

Splitter Terminal box



Description: Applicable in FTTH project Suitable for corridor, basement, room and building's outer walls application with the function of mechanical splice, fusion splice,light splitting, wiring distributions .

Features

- Industry Standard User Interface, Be made of high impact plastic.
- Can accommodate 1x8 & 1x16 PLC splitter,
- Anti-UV,Ultra violet resistant and rainfall resistant.
- Up to 16 FTTH drops.
- Wall and pole mountable
- 2 inlet ports,16 outlet ports.

Applications

- Widely used in FTTH access network.
- Telecommunication Networks
- CATV Networks
- Data communication Networks
- Local Area Networks

FTTH

Media Converter, patch panel, terminal box, wall mount box, closure box

Wall Mount Box

Introduction

SINDA Wall Mount Fiber Optic Housings are ideal for telecommunications closet where rack space is not available. The Wall Mount Housing provides easy access and installation of the Fiber Distribution Modules (FDM) or standard adapter panels. The wall mount Housing can accommodate both loose tube and tight buffered cable for greater flexibility. A wall Mount housing with the pre-terminated FDM can increase the productivity of the installation crew during installation. The Wall Mount Fiber Optic Housings are constructed from sheet steel or aluminum with a robust black powder coat with a light textured finish. An optional locking kit is available for extra security. The Wall Mount Fiber Optic Housing can be used for both singlemode and multimode applications and the FDMs or panels are completely compatible with SINDA Rack mountable hardware.

wall mount terminal box



Specifications		
ITEM NO.	SIZE	CAPACITY
SD-WM5A-24	455*405*80mm	24 Cores
SD-WM5A-48	455*405*120mm	48 Cores
SD-WM5A-72	455*405*150mm	72 Cores



Specifications		
ITEM NO.	SIZE	CAPACITY
SD-WM5B-24	455*405*80mm	24
SD-WM5B-48	455*405*120mm	48
SD-WM5B-72	455*405*150mm	72



Specifications		
ITEM NO.	SIZE	CAPACITY
SD-WM5AD-12	350*350*80mm	12
SD-WM5AD-24	350*350*80mm	24



Specifications		
ITEM NO.	SIZE	CAPACITY
SD-WM5BD-12	300*350*80mm	12
SD-WM5BD-24	300*350*80mm	24

FTTH



Media Converter, patch panel, terminal box, wall mount box, closure box

Closure Box

Fiber Closure Box



Specifications			
ITEM NO.	OUTER SIZE	CAPACITY	REMARK
SD-D8-1	Length: 410mm Diameter: 140mm	12 Cores	1. max capacity: 96cores 2. 6pcs/ctn 3. small box: 45*20*20cm 4. big box: 63*43*46cm 5. N.W.: 2.6KG 6. material: PC
		24 Cores	
		36 Cores	
		48 Cores	
FOSC 2in 2out	72 Cores		



Specifications			
PRODUCT	OUTER SIZE	CAPACITY	REMARK
SD-D8-2	Length: 440mm Diameter: 140mm	12 Cores	1. max capacity: 96cores 2. 6pcs/ctn 3. small box: 45*20*20cm 4. big box: 63*43*46cm 5. N.W.: 2.6KG 6. material: PC
		24 Cores	
		36 Cores	
		48 Cores	
FOSC 2in 2out	72 Cores		



Specifications			
PRODUCT	OUTER SIZE	CAPACITY	REMARK
SD-D8-7	Length: 500mm Diameter: 250mm	12 Cores	1. max capacity: 288cores 2. 4pcs/ctn 3. small box: 50*26*28cm 4. big box: 54*54*58cm 5. N.W.: 3.5KG 6. material: PC
		24 Cores	
		36 Cores	
		48 Cores	
FOSC 4in 4out	72 Cores		



Specifications			
PRODUCT	OUTER SIZE	CAPACITY	REMARK
SD-D8-10	Length: 450mm Diameter: 240mm	12 Cores	1. max capacity: 144cores 2. 6pcs/ctn 3. small box: 48*23*20cm 4. big box: 64*48*50cm 5. N.W.: 3KG 6. material: PC
		24 Cores	
		36 Cores	
		48 Cores	
FOSC 3in 3out	72 Cores		

FTTH



Media Converter, patch panel, terminal box, wall mount box, closure box

Closure Box

Fiber Closure Box



Specifications			
PRODUCT	OUTER SIZE	CAPACITY	REMARK
SD-I9-15	L*W*H:250*190*75 mm	12 Cores	1.max capacity:96cores 2.8pcs/ctn 3.small box:48*19*13cm 4.big box:50*40*55cm 5.N.W.:2.5KG 6.material:PC
		24 Cores	
		36 Cores	
		48 Cores	
FOSC 2in 2out	72 Cores		



Specifications			
PRODUCT	OUTER SIZE	CAPACITY	REMARK
SD-I9-13	L*W*H:465*180*12 2mm	12 Cores	1.max capacity:96cores 2. 8pcs/ctn 3.small box:48*19*13cm 4.big box:50*40*55cm 5.N.W.:2.5KG 6.material:PC
		24 Cores	
		36 Cores	
		48 Cores	
FOSC 2in 2out	72 Cores		



Specifications			
PRODUCT	OUTER SIZE	CAPACITY	REMARK
SD-I9-6(C)	L*W*H:400*200*12 2mm	12 Cores	1.max capacity:96cores 2.8pcs/ctn 3.small box:48*19*13cm 4.big box:50*40*55cm 5.N.W.:3KG 6.material:PC
		24 Cores	
		36 Cores	
		48 Cores	
FOSC 4in 4out	72 Cores		



Specifications			
PRODUCT	OUTER SIZE	CAPACITY	REMARK
SD-I9-8 (C)	L*W*H:450*216*11 0mm	12 Cores	1.max capacity:60cores 2.8pcs/ctn 3.small box:46*22*13cm 4.big box:47*47*50cm 5.N.W.:2.5KG 6.material:PC
		24 Cores	
		36 Cores	
		48 Cores	
FOSC 2in 2out	72 Cores		

Fiber Optic Equipments & Testing Tools

Fiber Optic Equipments & Testing Tools

Fiber Optic Equipments



Polishing Machine

Description: Apply for all types of fiber connectors ϕ 2.5/ ϕ 1.25 mm curved surface polishing & flat surface polishing.



Optical Return loss/Power Meter

Description: Insertion loss/Return loss Test Station is a high performance loss test station that is designed specially for Optical Passive Components production Test and Lab Test. It combines three different working modes as a return loss meter, optical power and loss meter and a stable laser source in one test station.



Fiber Optic Video Inspection

Description: The system includes a video inspection module, a black and white monitor, and a p2.5 ferrule adapter.



Fiber Pneumatic Crimper

Description: Special designed for crimp fiber connectors, Foot switch provide force reduction.



Optical Cutting Machine

Description: Metering, coiling and cutting the cable automatically Flexible cable length setting and adjustable coiling diameter Adjustable speed setting.

Fiber Optic Equipments & Testing Tools

Fiber Optic Equipments & Testing Tools

Optical Curing Oven



Description: Designed for curing epoxy of fiber connectors. Two set of heating plates are supplied

Fiber Fusion Splicer



Color LCD monitor & 256 magnification
 Compact & Light weight
 Reversible monitor with control panel on each side
 Max wind velocity of 15m/s.
 8 Sec. splice time,40 Sec.tube-heat time
 Simultaneous X and Y views
 Large capacity internal battery
 SYSTEM TEST ensures the best working condition
 User programmable
 Auto check fiber end face
 Auto calibrate parameters
 Store 8000 groups of splice results
 Multiple language options

Optic Laser Source & Power Meter



Description: Power meter is quite essential device both to construction and maintenance in optic fiber communication CATV and FTTH. Laser Source Equipped with high steady basic laser source, use the international latest integrated chip specialized for hand-held meters. 2 wavelengths are supported ranging from 1310nm to 1550 nm.

CONNECTING TECHNOLOGY & BUSINESS

SINDA

ADDRESS: Floor 13th jinyun shiji bulding, Street No. 6033, Shennan Road, Futian, Shenzhen, China. 518109

TEL: 86 755 2396 8035

FAX: 86 755 8826 5113

Email: sales@sindaoptic.com

Web: www.sindaoptic.com